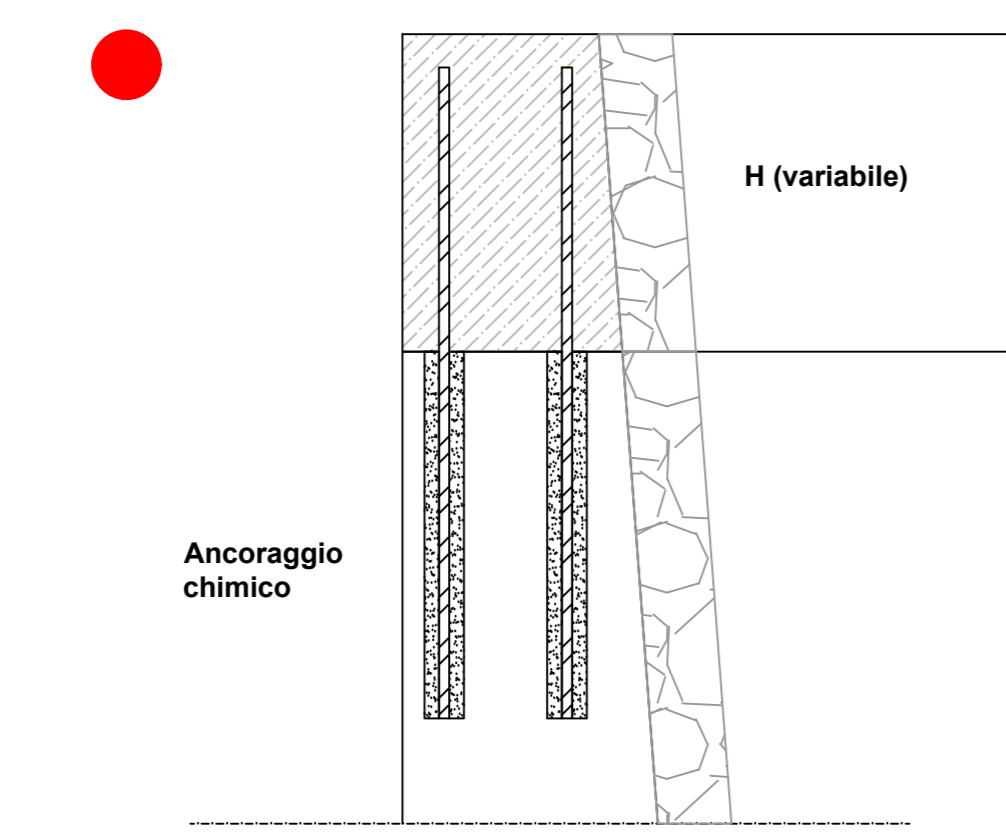


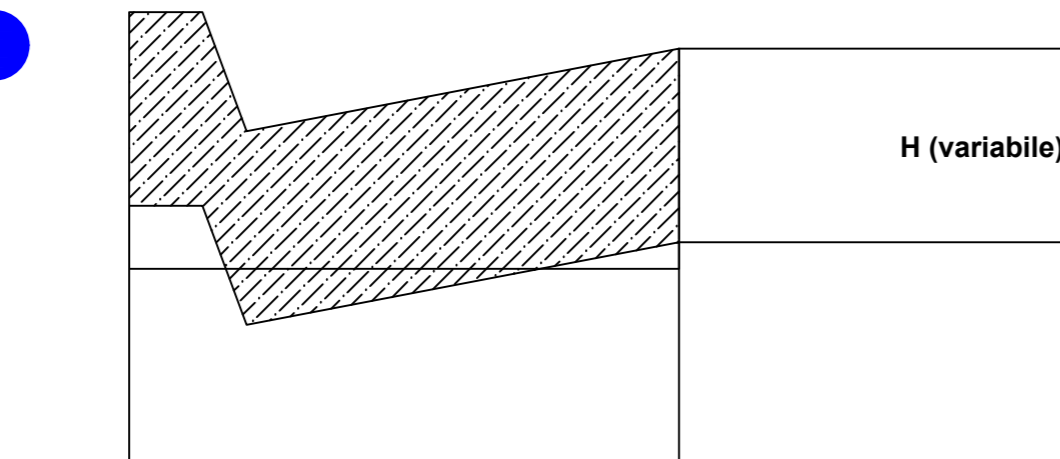
**Sopralzo muro - Riprofilatura**

Scala 1:10



**Riprofilatura zanella**

Scala 1:10



**Particolare tipo - Sede viadotto**

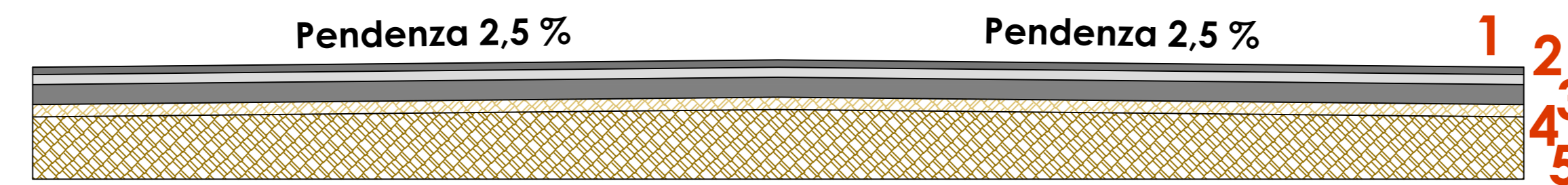
Scala 1:20



- 1 - Tappetino (s = 3 cm.)
- 2 - Binder (s = 4 cm.)
- 3 - Guaina bituminosa (s = 40 mm.)
- 4 - Soletta esistente

**Particolare tipo - Sede stradale**

Scala 1:20

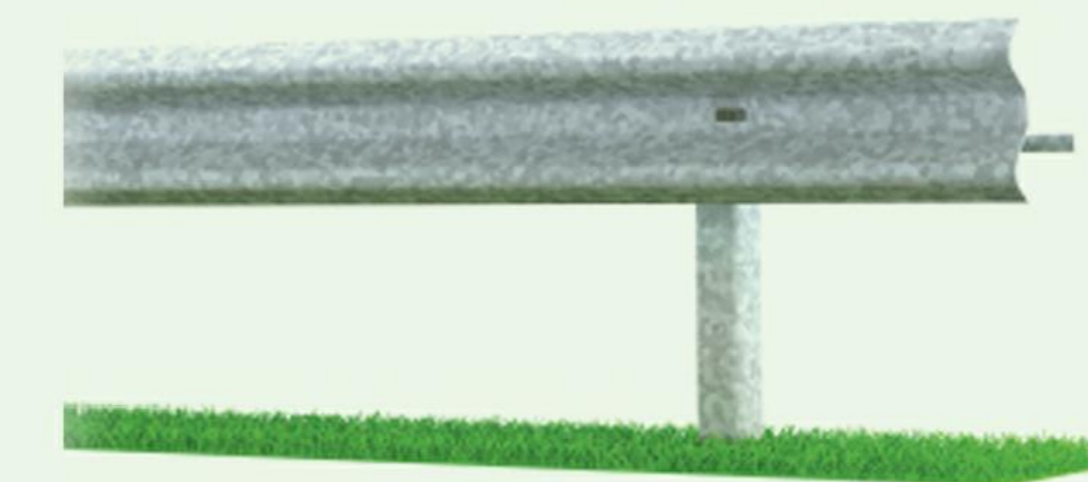


- 1 - Tappetino (s = 3 cm.)
- 2 - Binder (s = 4 cm.)
- 3 - Strato di base (s = 8 cm.)
- 4 - Misto stabilizzato da integrare (s = 5 cm.)
- 5 - Misto esistente (s = 25 cm.) - Da regolarizzare

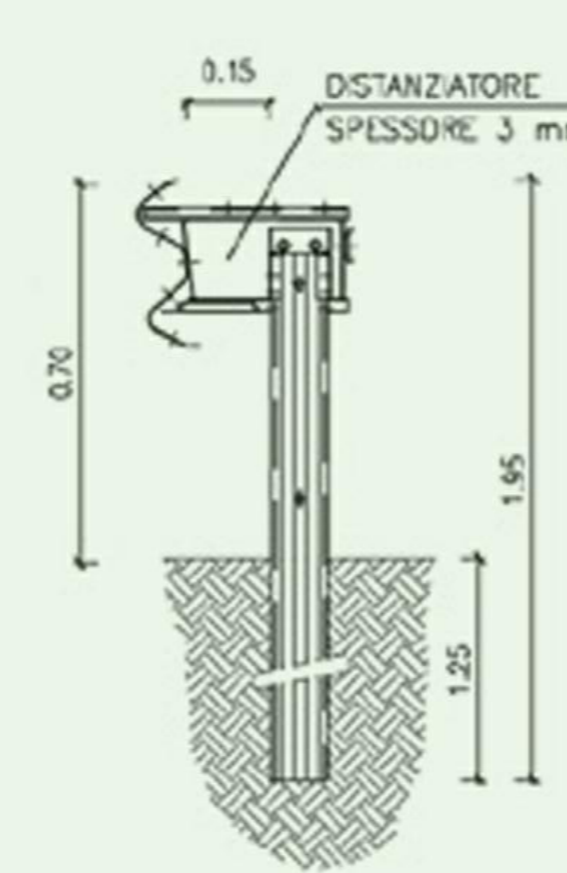
**Tipologico giunto viadotto**



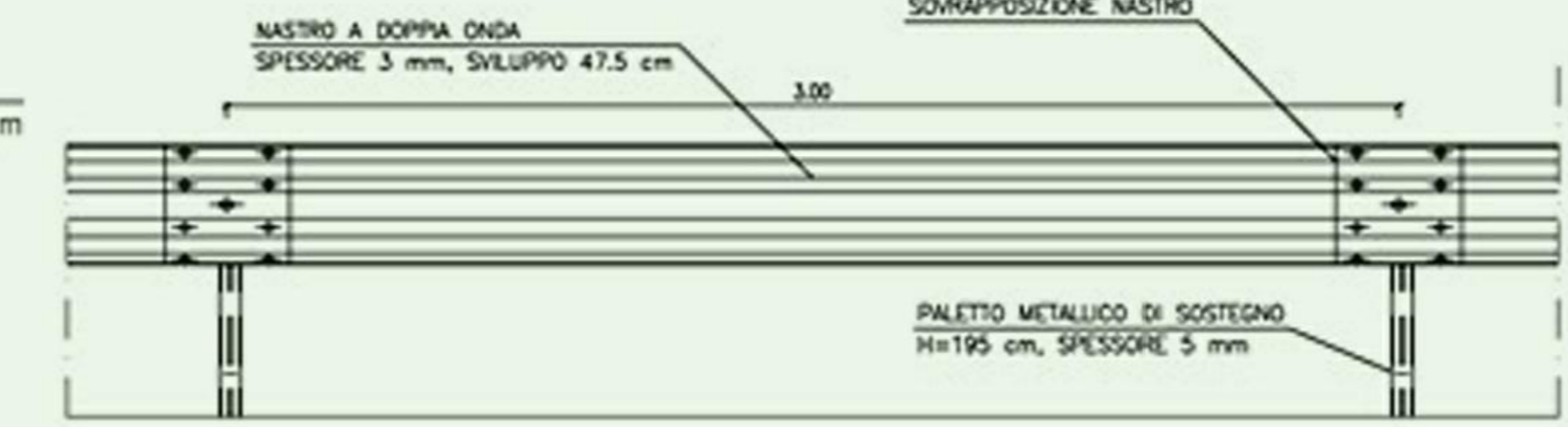
**Barriera stradale Tipo (rilevato)**



SEZIONE



PROSPETTO

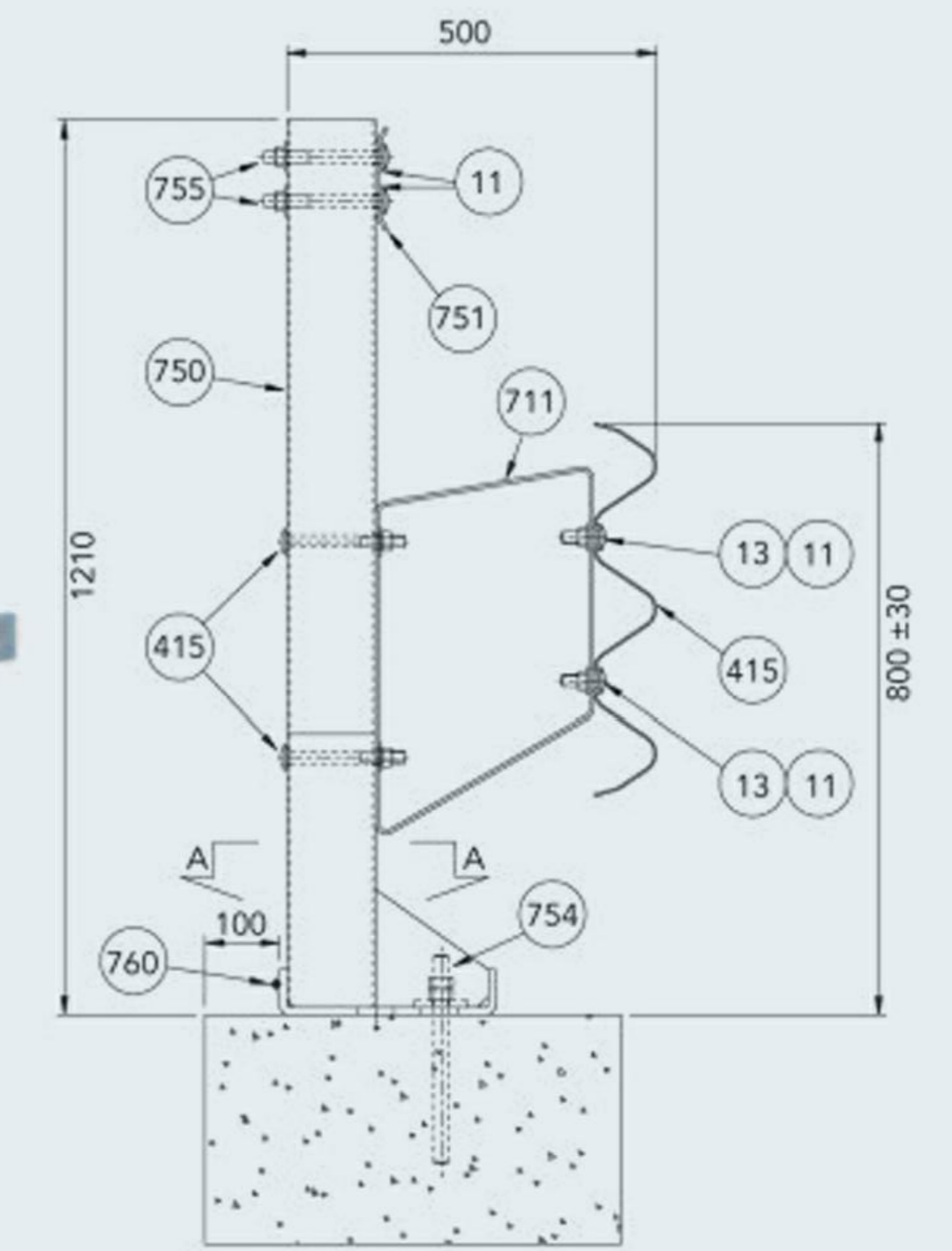


PIANTA

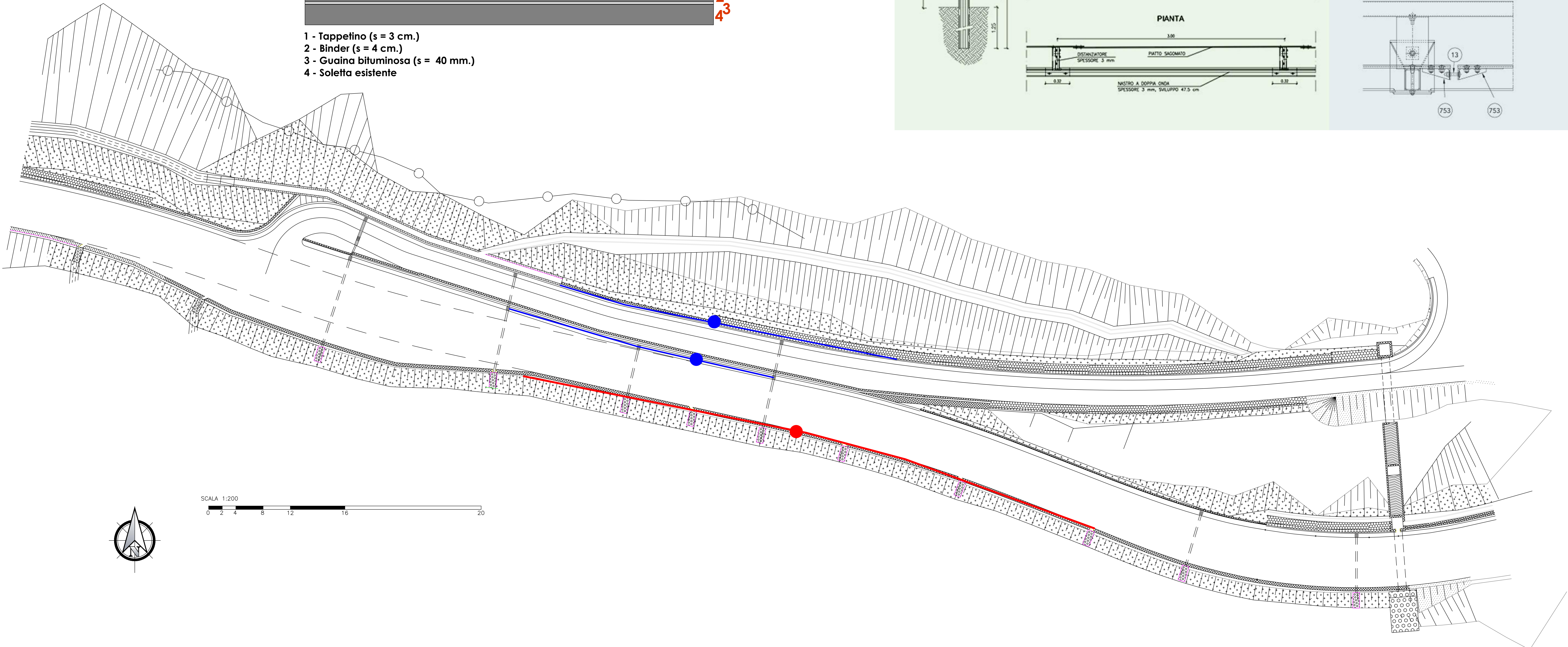
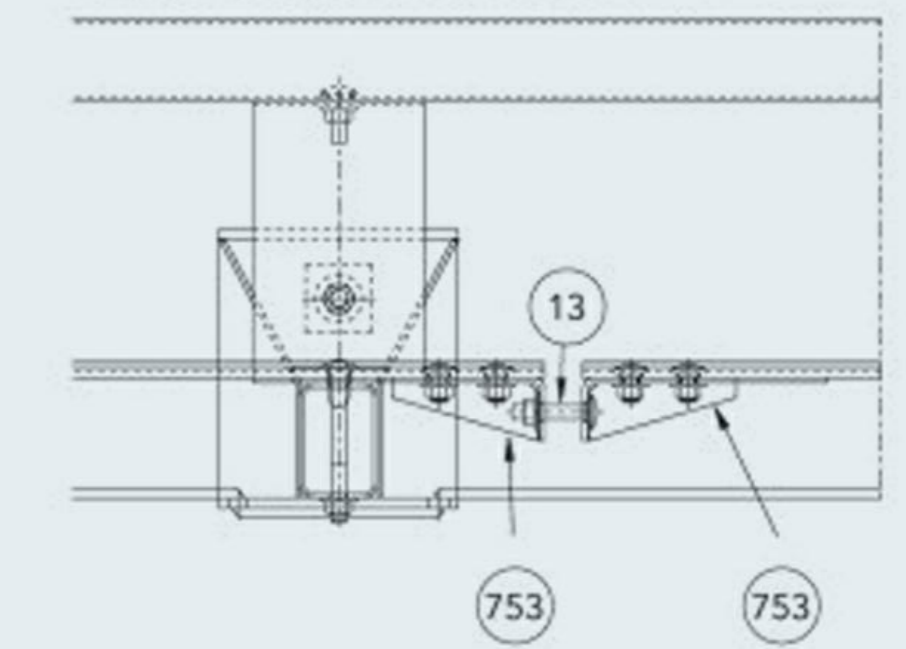


Tipologici barriere stradali  
 (per dettagli e specifiche si faccia riferimento al C.M. e Capitolato)

**Barriera stradale Tipo (bordo ponte)**



Giunzione bandella con trazione ogni 18m  
 Traction plate junction, every 18m



SCALA 1:200

